

HIP

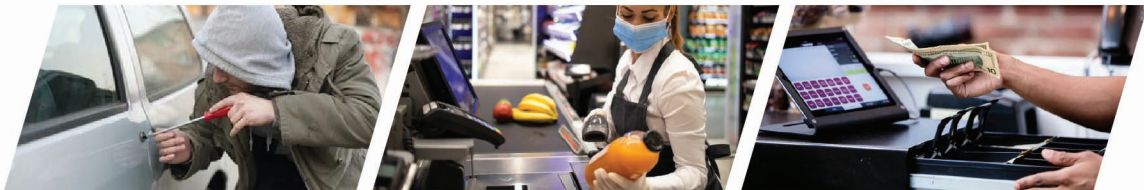
2MP Dual Light Eyeball Camera (2.8mm)



มั่นใจทุกธุรกิจ ปลอดภัย 100%



จับภาพมีจอาชีพ ได้คมชัดแม้ระยะไกล

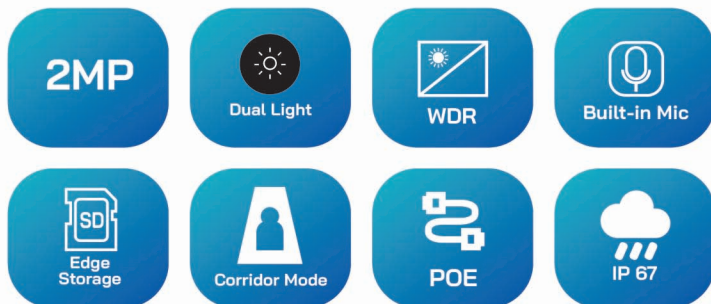


MODEL
CMU2252

ตอบโจทย์ CCTV HIP คุณภาพ
ภาพคมชัดระดับ Full HD

2.0
MegaPixel

Full HD
CAMERA



FEATURES

- ▶ High quality image with 2MP, 1/2.8" CMOS sensor
- ▶ 2MP (1920*1080)@30/25fps; 720P (1280*720)@30/25fps
- ▶ Ultra 265, H.265, H.264
- ▶ 120dB true WDR technology enables clear image in strong light scene
- ▶ Support 9:16 Corridor Mode
- ▶ Built-in Mic & Speaker
- ▶ Smart IR, up to 30m (98ft) IR distance
- ▶ White Light, up to 30m (98ft) white light distance
- ▶ Supports 128 G Micro SD card
- ▶ IP67 protection
- ▶ Support PoE power supply
- ▶ 3-Axis

ISO9001:2015

ขอสงวนสิทธิ์ในการเปลี่ยนแปลงรายละเอียดโดยไม่ต้องแจ้งให้ทราบล่วงหน้า บริษัท เอช ไอ พี โกลบอล จำกัด

THE BEST
SECURITY SOLUTION



2MP Dual Light Eyeball Camera (2.8mm) CMU2252



- 2MP
- Dual Light
- WDR
- Edge Storage
- Corridor Mode
- POE
- Built-in Mic
- IP 67



ใช้งานร่วมกับ Network video Record

Technical Specifications

Model	CMU2252
--------------	----------------

Camera

Sensor	1/2.8", 2.0 megapixel, progressive scan, CMOS
Lens	2.8mm@F1.6
Angle of View (H,V)	106.7°, 57.1°
Shutter	Auto/Manual, 1 ~ 1/100000s
Minimum Illumination	Colour: 0.002Lux (F1.6, AGC ON) 0Lux with IR on
Day/Night	IR-cut filter with auto switch (ICR)
S/N	>52dB
IR Range	Up to 30m (98ft) IR range
IR On/Off Control	Auto/Manual
Defog	Digital Defog
WDR	120dB

Video

Video Compression	Ultra 265, H.265, H.264
Resolution	Main Stream: 1080P (1920*1080), Max 30fps; 720P (1280*720), Max 30fps
Video Bit Rate	Sub Stream: D1 (720*576), Max 30fps; 640*360,Max 30fps; 2CIF, Max 30fps; CIF, Max 30fps;
Support	128 Kbps-6 MbpsMotion Detection , Privacy Mask

Image

White Balance	Auto/Outdoor/Fine Tune/Sodium Lamp/Locked/Auto2
Digital noise reduction	2D/3D DNR
Flip	Normal/Vertical/Horizontal/180°/90°Clockwise/90°Anti-clockwise
HLC	Supported
BLC	Supported

Audio

Audio Compression	G.711
Two-way Audio	Supported
Suppression	Supported
Sampling Rate	8KHZ

Storage

Edge Storage	Micro SD, up to 128GB
Network Storage	ANR, NAS(NFS)

Smart

Behavior Detection	Cross line, intrusion(based on human body detection)motion detection, tampering alarm, audio detection
General Function	Watermark, IP address filtering, access policy, ARP protection, RTSP authentication, user authentication, HTTP authentication

Network

Protocols	IPv4, IGMP, ICMP, ARP, TCP, UDP, DHCP, RTP, RTSP, RTCP, RTMP, DNS, DDNS, NTP, FTP, UPnP, HTTP, HTTPS, SMTP, SSL, SNMP, ONVIF
Web Browser	Plug-in free live view: Chrome57.0+, Firefox 58.0+, Edge 16+

Interface

Network	10/100M Base-TX Ethernet
Built-in Mic	Supported
Built-in Speaker	Supported

General

Power	DC 12V±25%, PoE (IEEE 802.3af)Power consumption: Max 8.0W
Working Environment	-30°C ~ 60°C (-22°F ~ 140°F), Humidity: ≤95% RH (non-condensing)
StorageEnvironment	-30°C ~ 60°C (-22°F ~ 140°F), Humidity: ≤95% RH (non-condensing)
Ingress Protection	IP67

